

openbom

Manifesto: Build Products Faster With Accurate Data

Oleg Shilovitsky CEO, co-founder



Aerospace



Machinery and
Complex Equipment



Furniture and CPG



Medical
Equipment, High-tech &
Electronic



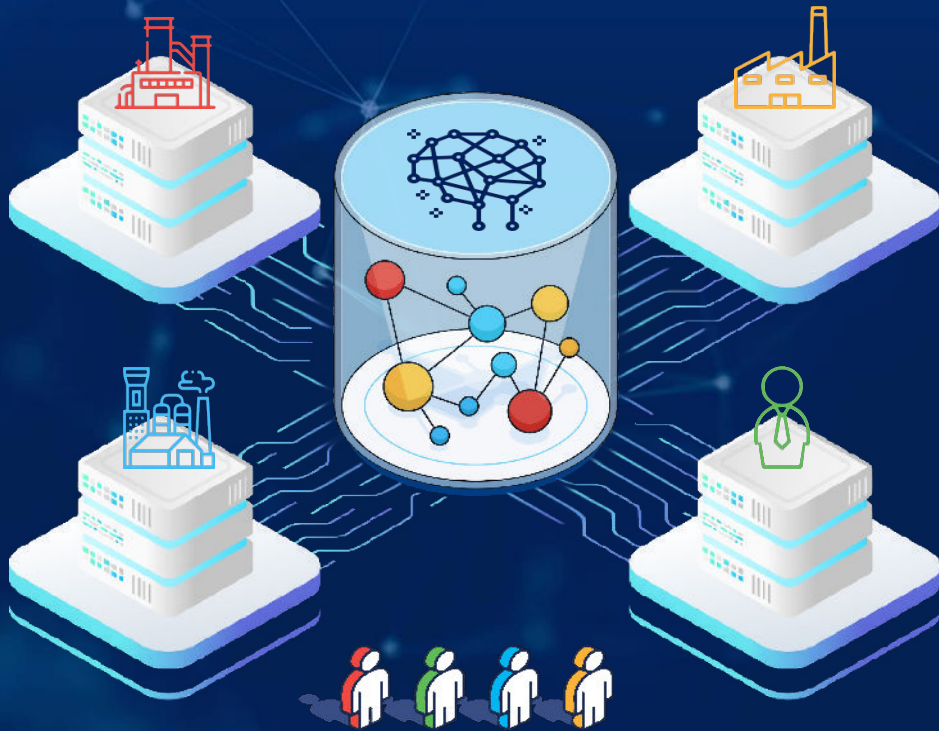
Automotive



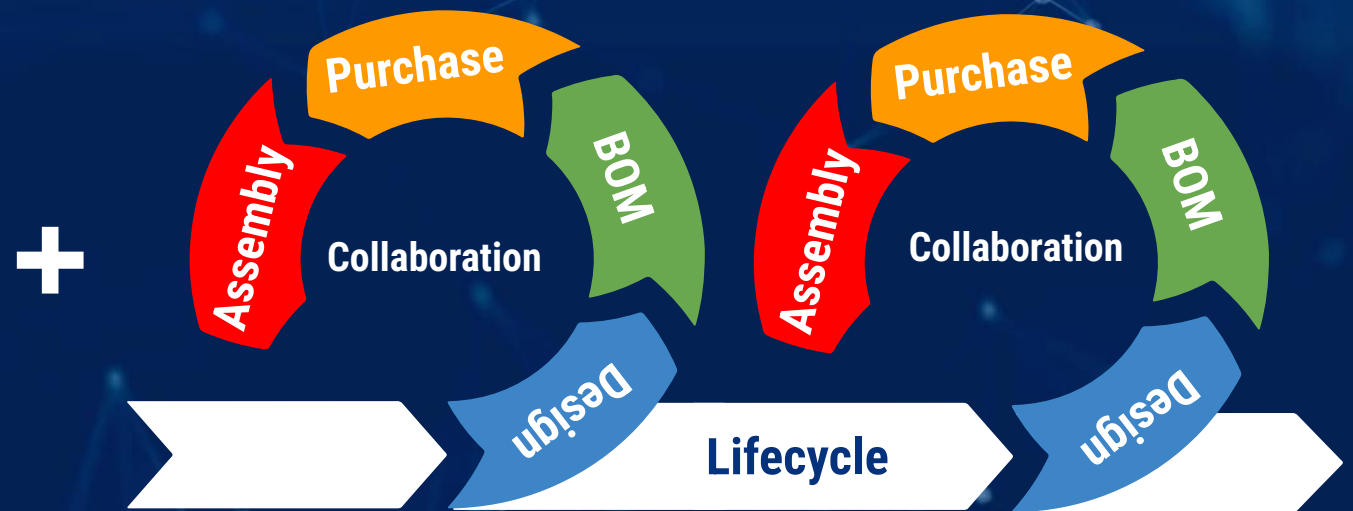
Medical Devices

What is OpenBOM in a nutshell?

Product Knowledge Graph Platform



New product Development Agile Process



Who is Oleg Shilovitsky?



Oleg Shilovitsky
CEO, co-founder

20+ years of working for large software vendors and startups in CAD, PDM, and PLM

Experience with enterprise industrial companies (e.g. Volvo, Boeing, Nokia) as well as with many SMEs

Started a professional blog - Beyond PLM,  which became the leading PLM blog online, published ~4000 articles for the last 15 years

VOLVO

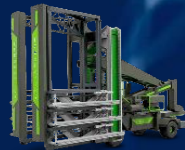
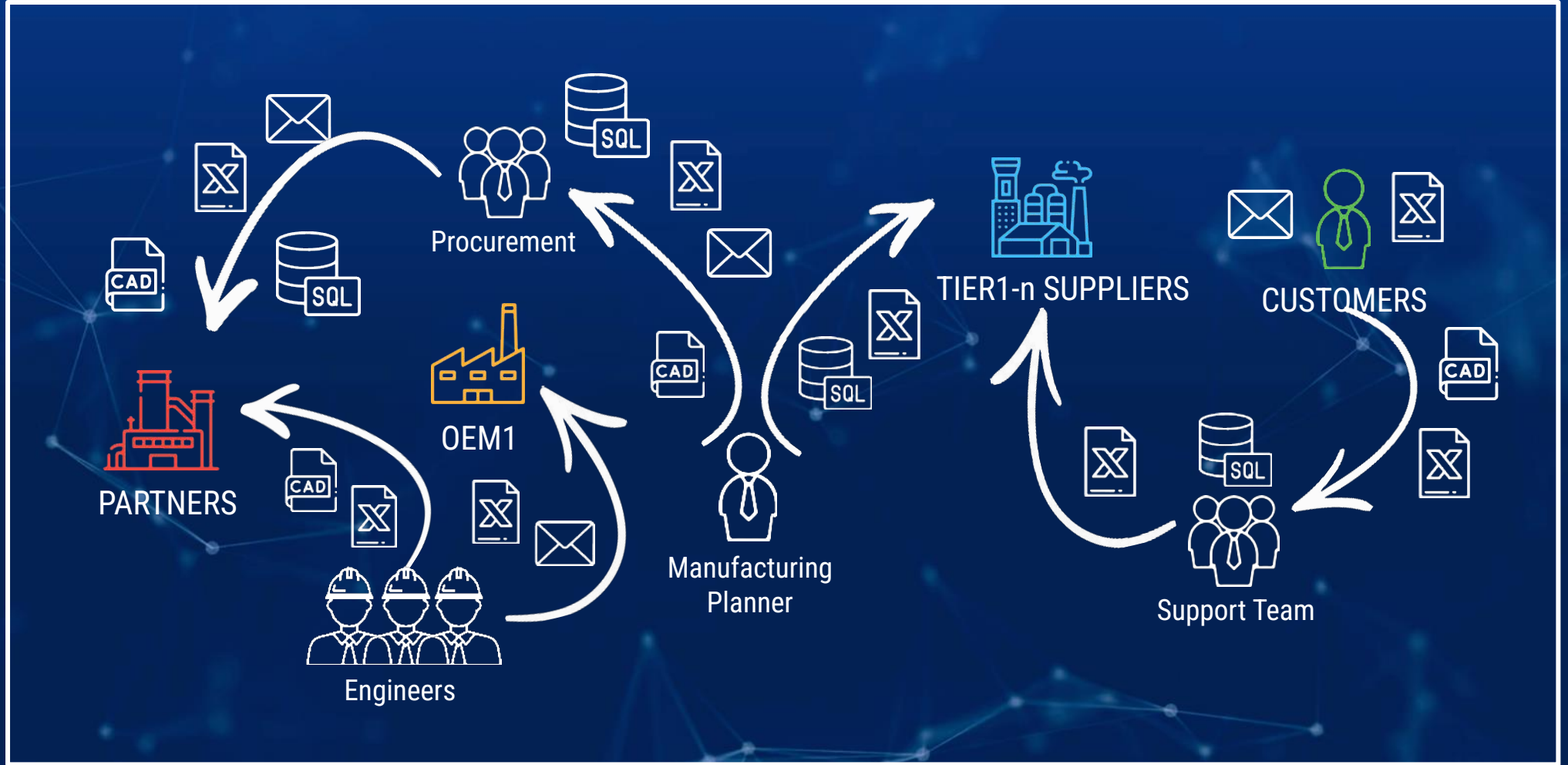
 **BOEING**

NOKIA

 **DASSAULT
SYSTEMES**

 **AUTODESK**

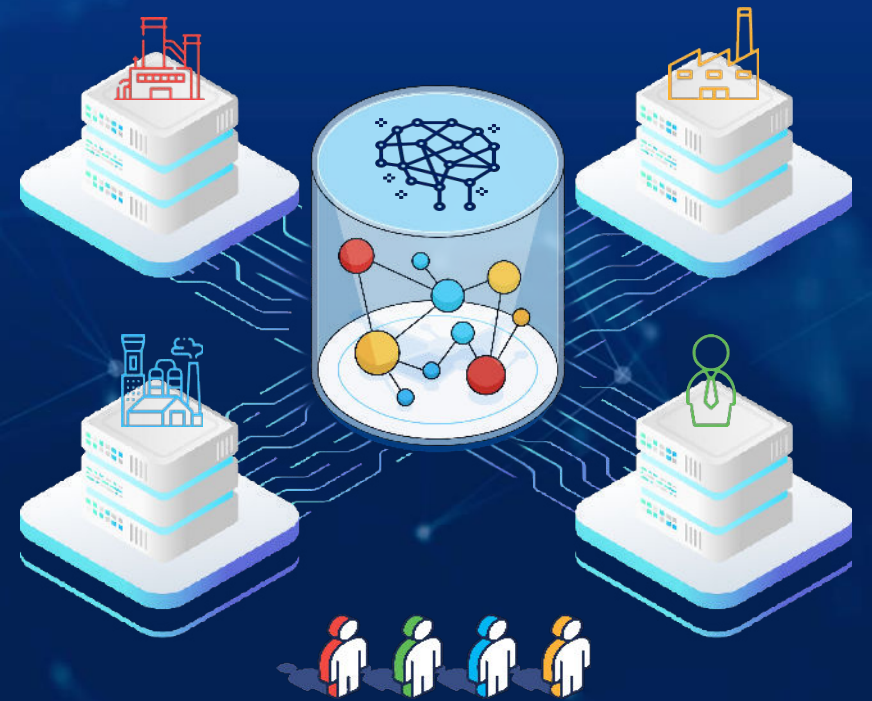
Manufacturing Maze: Data Complexity in Product Development



After working with 1000s of manufacturing companies, here is what we learned:

- ✓ Companies need to organize product information
- ✓ Decision process is critical and requires accurate information
- ✓ Need to accelerate processes for new product development
- ✓ There is a need to mitigate supply chain and compliance risks
- ✓ Products live longer, requires maintenance and re-fabrication

From data chaos to open graph model, collaboration & decision support



● Excel ● Legacy DBs ● CAD Export ● Emails

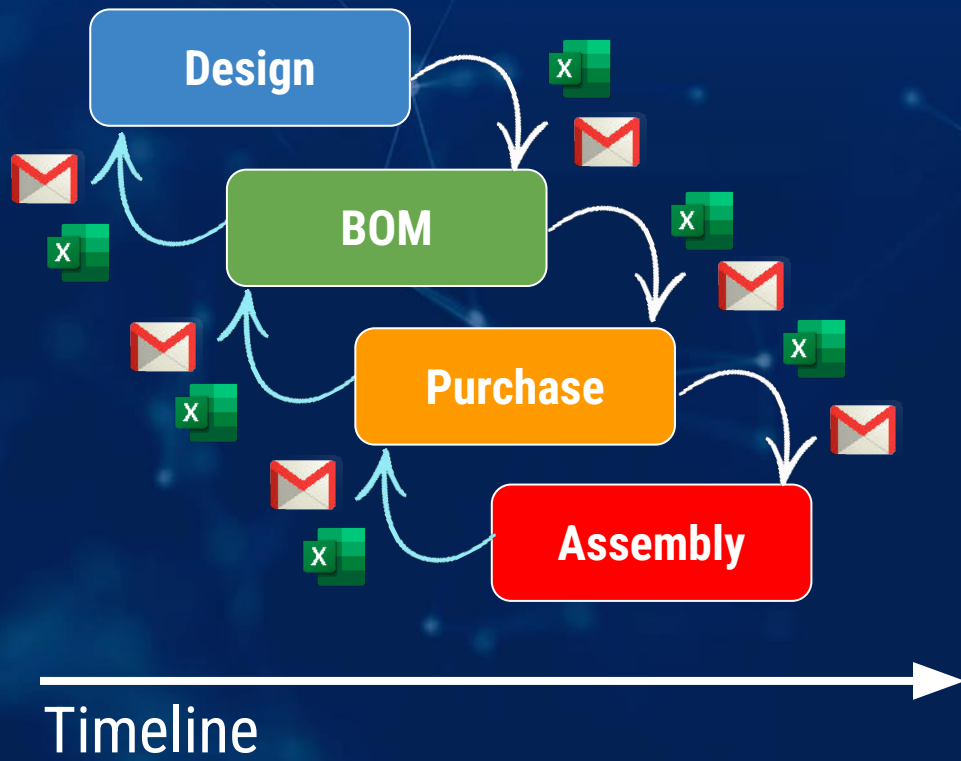
● Integrated ● NPD ● Change Management ● Costing ● Real-time share

OpenBOM™ Values:

1. Remove the pain of inefficient data management and integrations
2. Unmatched collaboration for manufacturing companies & supply chain
3. Decision support using graph data science and AI

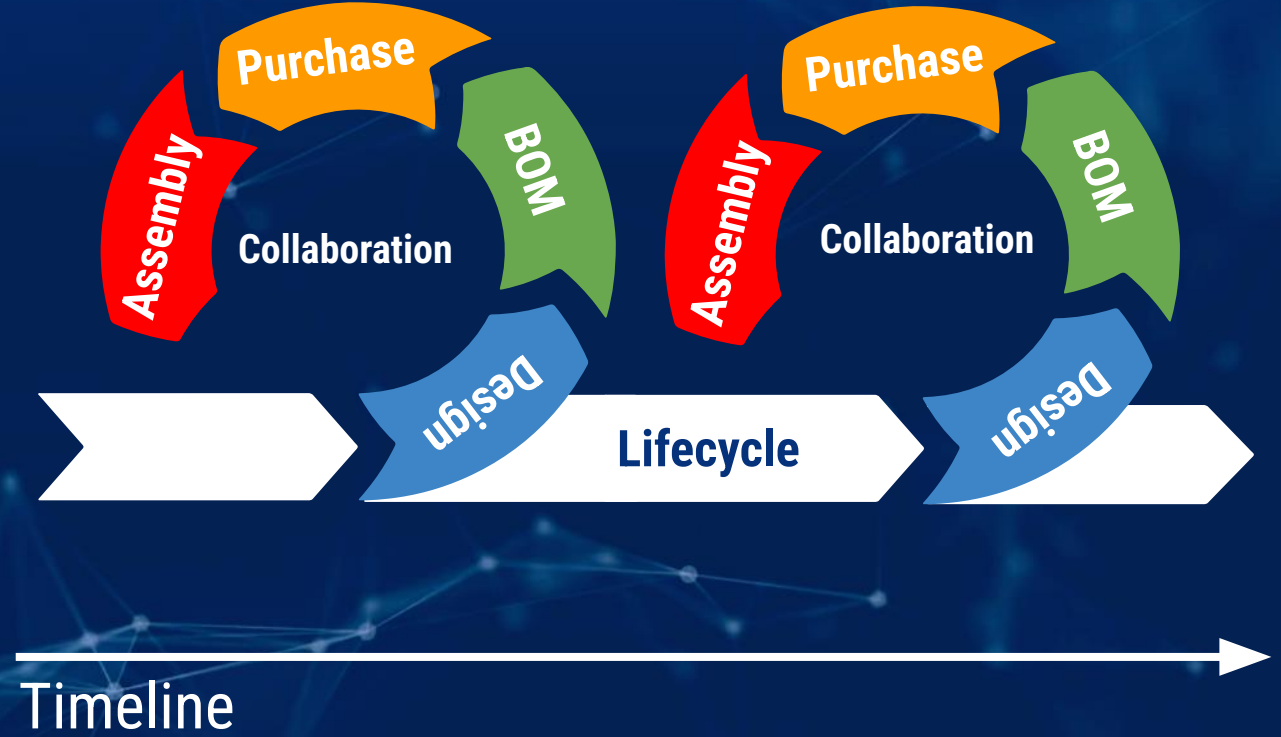
Integrated Agile New Product Development Process

Waterfall Process

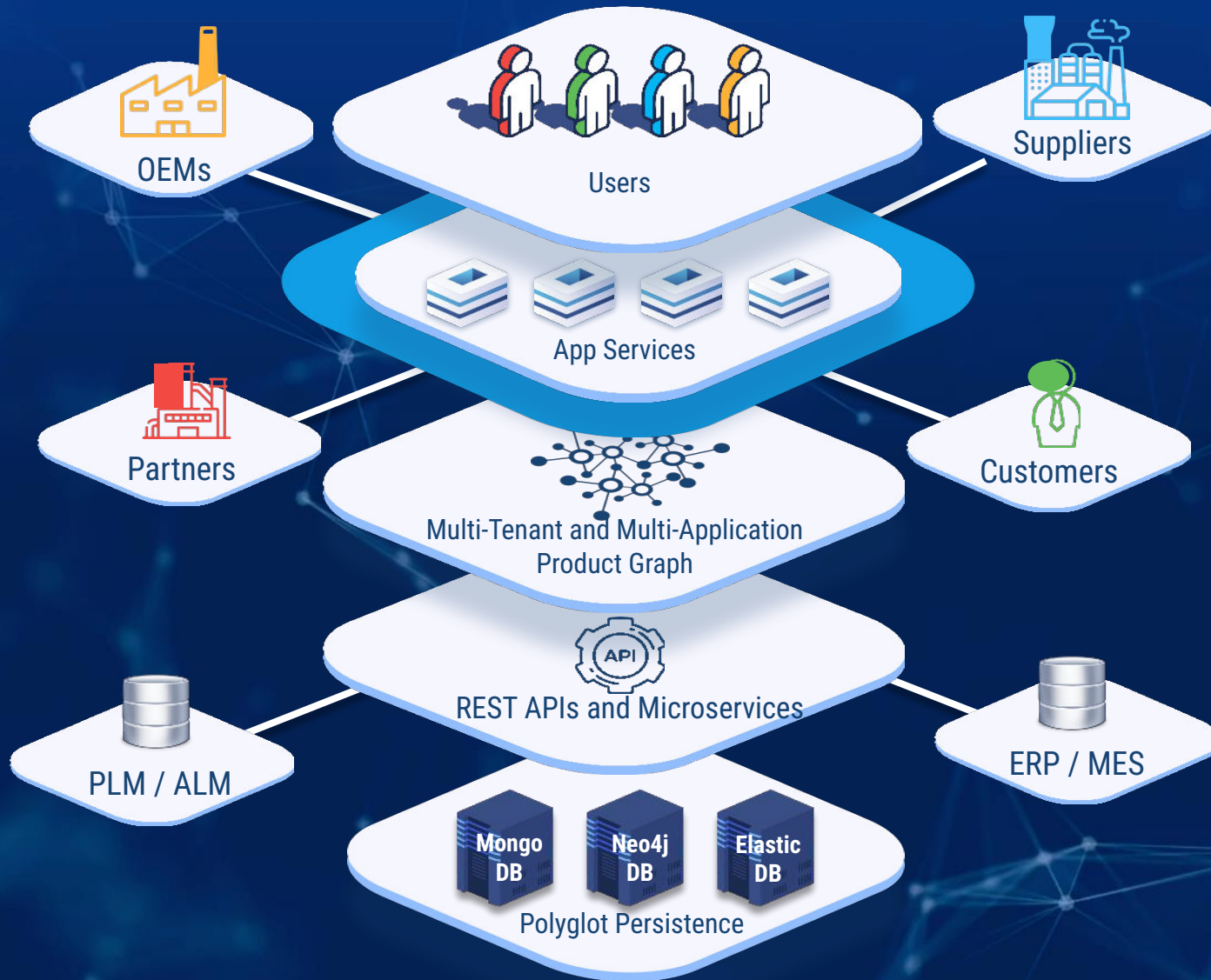


VS.

Agile Process



OpenBOM Platform Architecture & Technology Highlights



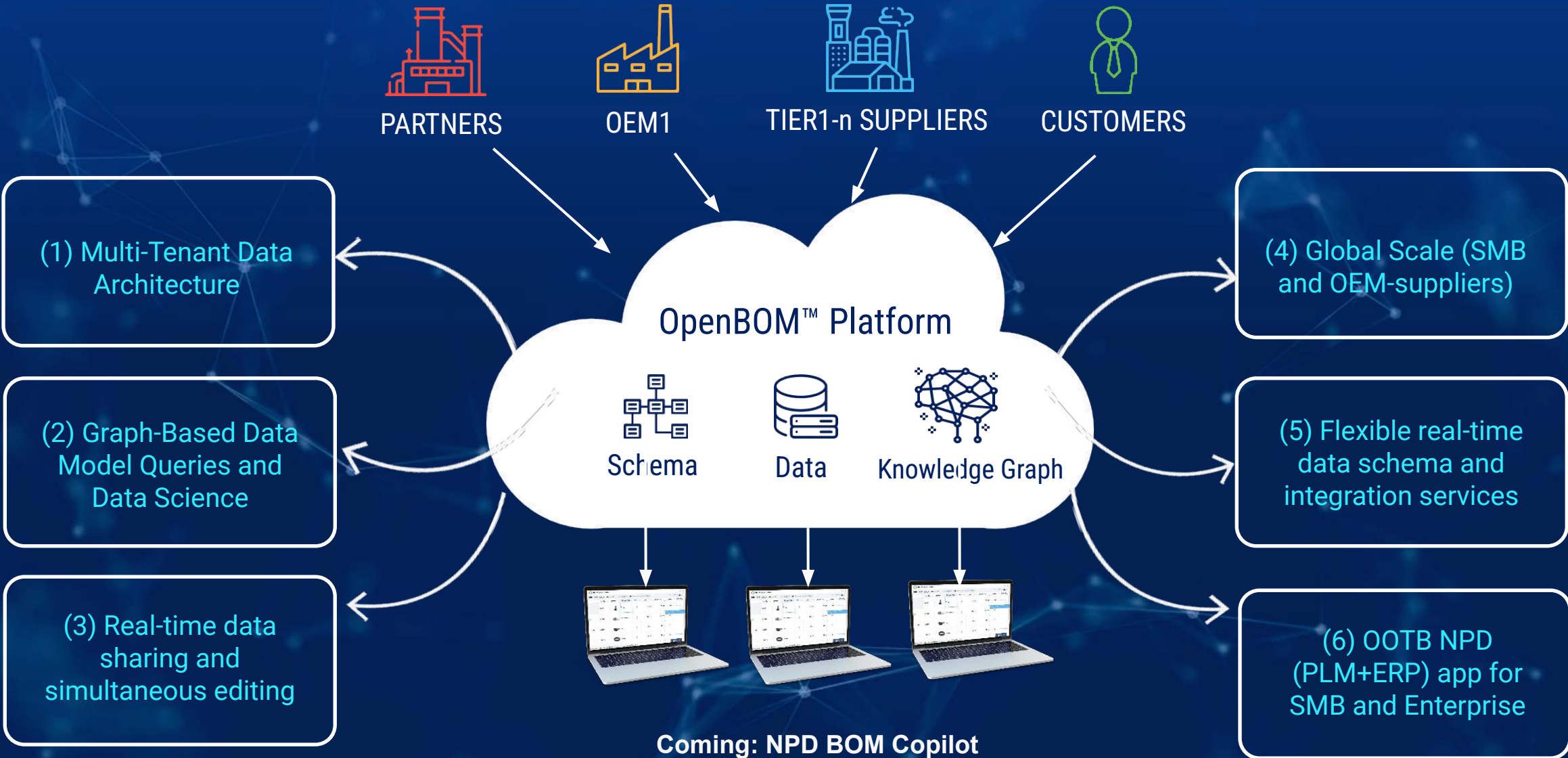
- SaaS, public, private (AWS)
- Multi-tenant flexible data model
- Patented real-time collaboration
- Simultaneous Collaborative Editing
- Role-based instant data sharing
- Graph & Data Science support
- Generative AI / LLM support in research

Gartner

By 2025, graph technologies will be used in 80% of data and analytics innovations, up from 10% in 2021, facilitating rapid decision making across the organization

80%
By 2025

Key Differentiators Of OpenBOM Digital Thread Platform



What Do Customers Say About OpenBOM?



80+

[Public user stories online](#)

460+

[#1 by the number of G2 reviews in PLM](#)



“it is right-sized for my company. Filling a niche that MRP systems are not. Other programs are too limited or too cost too much. OpenBOM offers a lot of benefits to a company in a certain range and at a great value.”

John E, President, Gates Underwater - [Read the story](#)



“Just as Onshape is a single source of truth for the CAD design, OpenBOM does the same for manufacturing production planning, purchasing, and inventory control. It is a perfect relationship.”

David Rubli, Senior Mechanical Engineer, Xtend Robotics [Read the story](#)



“From the multi-level product BOM, we create an Order in OpenBOM for our next batch of units. The Quantity Gap (the on-hand inventory) is calculated and the buyers know immediately what we need to buy to complete that order. OpenBOM vendor sources have been pre-defined for each item to smooth the way when supplier shortages are encountered.”

Jackie Wu, CEO - [Read the story](#)



OpenBOM Implementation Strategy and Plan



Spreadsheets are not free

[How OpenBOM Saves Money and Why Excel is Not Cost-Free](#)

[When is the right time to implement PLM?](#)



How to pitch OpenBOM to your organization

[5 Values of OpenBOM You Should Not Miss When Pitching OpenBOM To Your Boss](#)

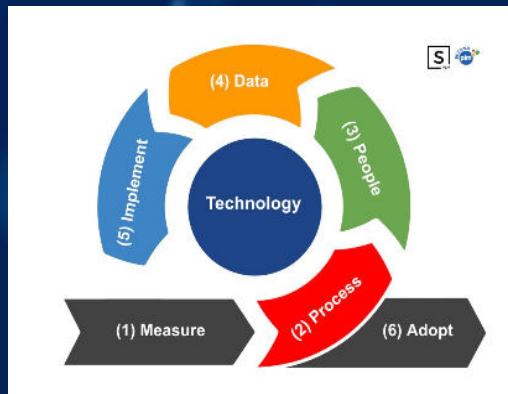
[What Every SOLIDWORKS User Must Try To Do With OpenBOM](#)

How to implement OpenBOM using people-first approach

[Helping Organizations Adopt PLM Software: A People-First Approach](#)

[How OpenBOM helps to streamline engineering and procurement Functions](#)

[OpenBOM - Getting Started Help](#)



The logo for OpenBOM features the word "openbom" in a white, lowercase, sans-serif font. The letter "o" is replaced by a circular icon composed of four colored segments: green at the top, blue on the right, yellow at the bottom, and red on the left. A thin white horizontal line is positioned below the "open" portion of the text.

openbom

Contact: sales@openbom.com