



Build Products Faster With Accurate Data

Oleg Shilovitsky CEO, co-founder



Aerospace



Complex Equipment



Furniture and CPG



High-tech & Electronic



Automotive



Food and Beverages



Oleg Shilovitsky
CEO, co-founder

→ **20+ years of working** for large software vendors and startups in CAD, PDM, and PLM

→ **Experience with** enterprise industrial companies (e.g. Volvo, Boeing, Nokia) as well as with many SMEs

→ **Started a professional blog - Beyond PLM**, which became the leading PLM blog online, published ~4000 articles for the last 14 years

VOLVO

 **BOEING**

NOKIA

 **DASSAULT
SYSTEMES**

 **AUTODESK**

Manufacturing is transforming...



Manufacture Better,
Faster, Cheaper



Post COVID Digital
Transformation



Ongoing supply
chain disruption



Sustainability in
manufacturing



Regulation
complexity and risks



Manufacturing on
Demand (MOD)



Examples of big & disruptive events

There are many smaller events impacting engineering and manufacturing operation daily...

Xirallic Car Colors



Fukushima

Chip Shortage



COVID 19

Ever Given

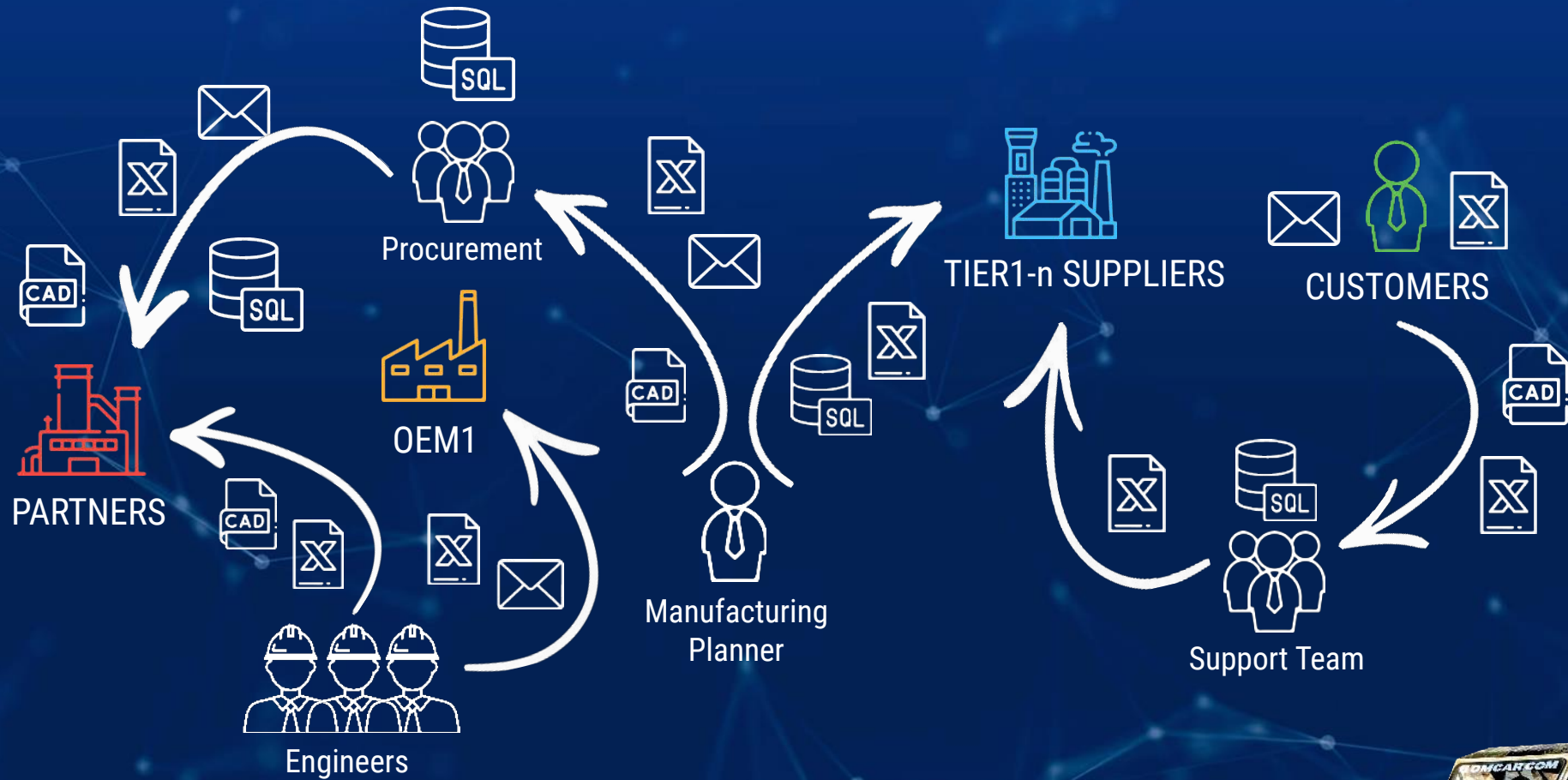


Accident

Top 5 Urgent Manufacturing Problems

- ✓ Information accuracy
- ✓ Improve decision process
- ✓ Accelerate processes (NPD, CM)
- ✓ Risk Mitigations (supply chain, compliance)
- ✓ Support new manufacturing models (XaaS)

Problem: Product Data Management Complexity

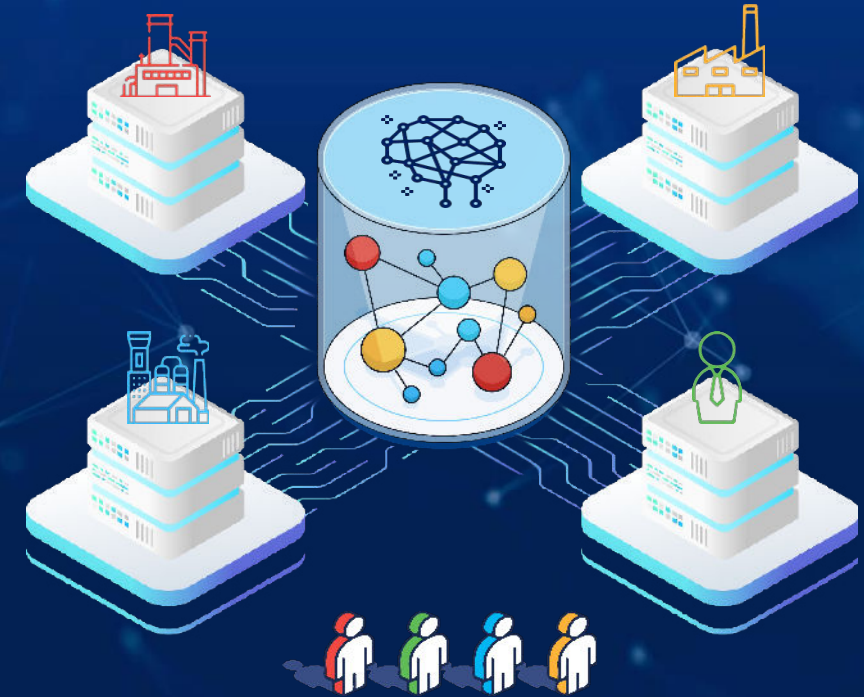


From data chaos to agnostic product graph model, collaboration & decision support

Excels, Legacy Databases, PLM, MES, ERP, CRM



Multi-Tenant Product Graph-Based Digital Thread



● Excel ● Legacy DBs ● PLM/MES/ERP/CRM ● Online Public Data

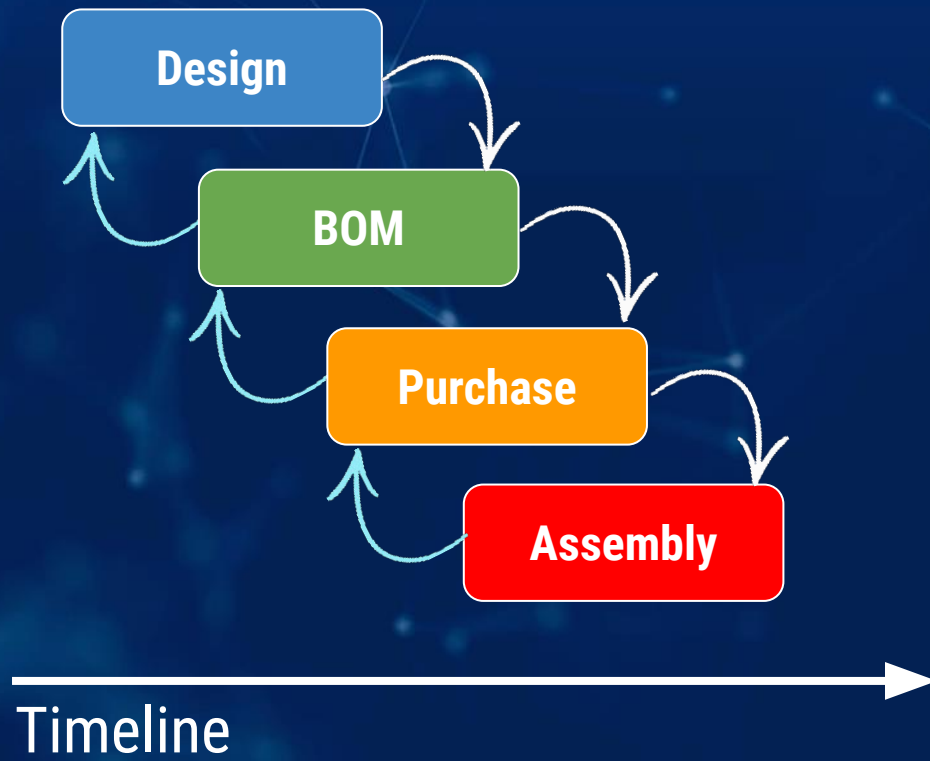
● NPD ● BOM Copilot ● Change Impact ● Costing ● Sustainability

OpenBOM™ Values:

1. Remove the pain of inefficient data management and integrations
2. Unmatched collaboration for manufacturing companies & supply chain
3. Decision support using graph data science and AI

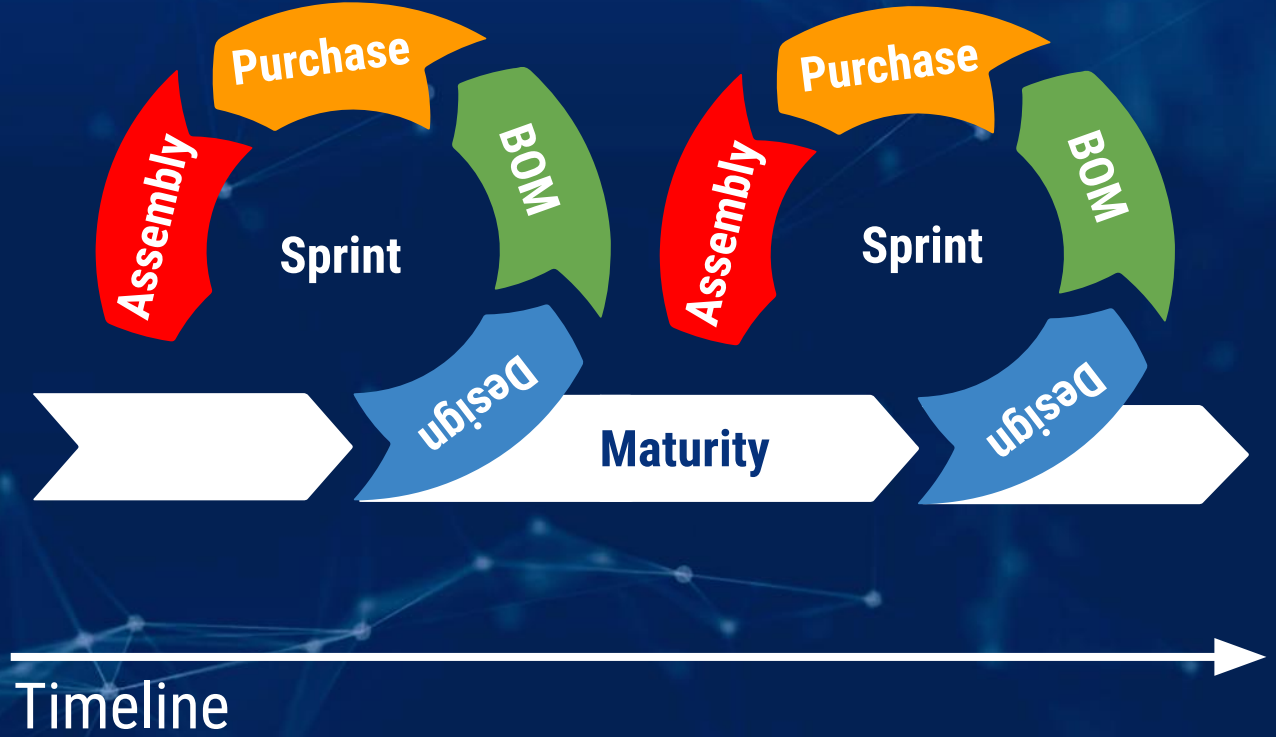
NPD: Build Products Faster With Accurate Data

Waterfall Process



VS.

Agile Process



OpenBOM Solutions Strategy For SMB and Enterprise



New Product Development

- OpenBOM for SMB/SME (PLM+ERP)
- NPD for Enterprise
- BOM NPD & collaboration (enterprise)
- Purchasing intelligence (insight)
- ...



Decision Support & Analytics

- Enterprise cost estimation (PLM/ERP)
- Change Impact Analysis
- Suppliers risk assessment
- Change management intelligence (insight)
- ...



Artificial intelligence

- Graph Navigation
- BOM Copilot (ChatGPT for BOM)
- ...

Customer Story - Tomcar

Attributes
Documents
Images
Projects
Products
Revisions
Specs
Requirements
Cost
Suppliers
Lead time
Compliance
Sustainability
...



Part selection
Change Management
Cost analysis
Sourcing process
Regulation support

Customer Story - Tomcar



PROBLEM:

Tomcar was looking for improved data management and communication for internal team and partners

"...before OpenBOM, we did not have a final BOM that was accurate or easy to share. We needed a full product BOM. We have detailed formal agreements with partners, we could tell them what to build [in terms of the product], but couldn't tell me what to buy, there was too much Tribal Knowledge!"

SOLUTION:

"I absolutely love that OpenBOM lets me share accurate, complete BOMs with vendors, partners, customers, my colleagues in Israel, and so many more.", says Jonathan. "It is great for my team and great for the company."

Jonathan Drori, Lead Engineer

[Read OpenBOM Tomcar Story](#)

Use Case #1: Design to Purchase Process (NPD) for SMB/SME

- Replace Excel
- Integrate with CAD
- PDM/PLM
- BOM Management
- Inventory+Procurement
- OpenBOM=PDM+PLM+ERP

“it is right-sized for my company. Filling a niche that MRP systems are not. Other programs are too limited or too cost too much. OpenBOM offers a lot of benefits to a company in a certain range and at a great value.”

John E, President, Gates Underwater

[Read the story](#)

“Just as Onshape is a single source of truth for the CAD design, OpenBOM does the same for manufacturing production planning, purchasing, and inventory control. It is a perfect relationship.”

David Rubli, Senior Mechanical Engineer, Xtend Robotics

[Read the story](#)



Use Case #2: OpenBOM for Enterprise (New Product Development)

- Replace Excel
- Agile NPI/NPD
- Team Collaboration
- Data Integration
- Inventory Control
- RFQ/Purchasing

What do you like best about OpenBOM?

The fact that OpenBOM interfaces with Solidworks so seamlessly is a huge benefit! Its as simple as installing the plug in for Solidworks. From there you can create or update a BOM in the OpenBOM platform using a Solidworks assembly with just one click of a button.

What problems is OpenBOM solving and how is that benefiting you?

It allows for us to NOT have to use a messy Excel table that is bounced around a large group of people (Engineers, Supply Chain, Management, etc.) . OpenBOM functions as a single source of truth and allows multiple collaborators to work together seamlessly.

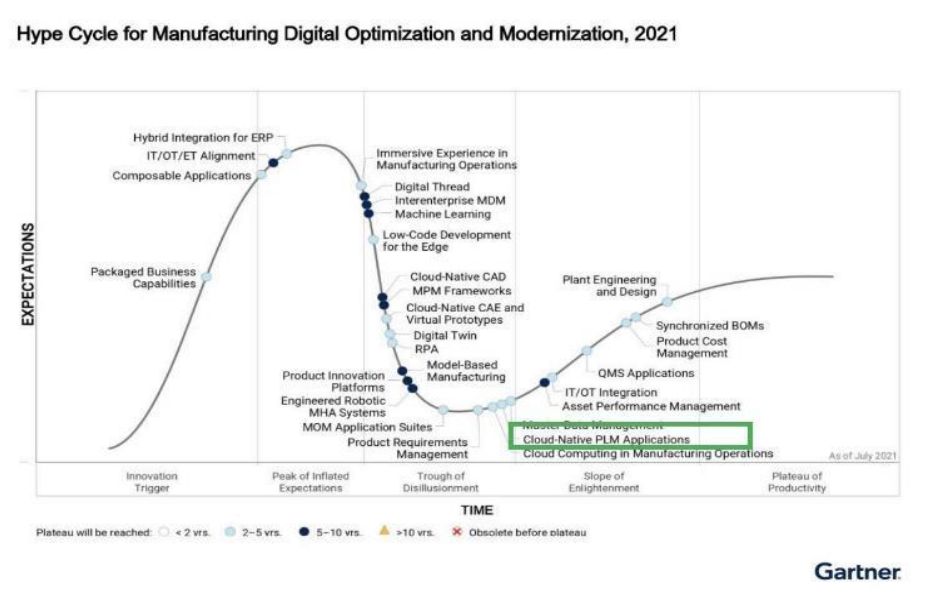


*Nicolas Zamora, Mechanical Engineering Manager
Beckman Coulter Diagnostics*

<https://www.g2.com/products/openbom/reviews/openbom-review-8090696>

Why Now?

Cloud-native PLM and Digital Thread Trends



5-20%
in 2-5 years

Gartner

According to Gartner,
in 2-5 years – 5-20% of market
will be using cloud-native PLM
platforms

66%

CIMdata

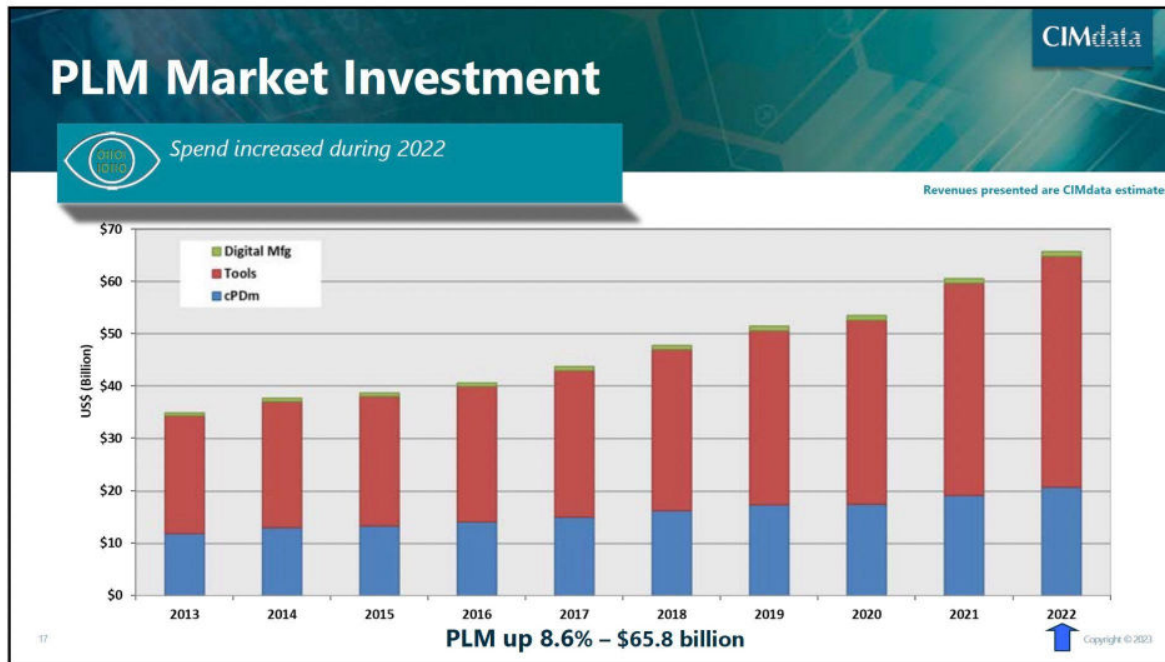
According to CIMdata,
66% of industrial companies
are considering a move to
cloud-based PLM solutions

How Big It Can Get?

PLM market, underserved segments and potential market share for OpenBOM

2022 PLM Market Results

2023 PLM Market & Industry Forum—30 March 2023



**\$20B cPDM
Business**

**\$4B
opportunity**

- 20% of market is moving to cloud-native
- Medium Size enterprises are transforming
- Regulated market, supply chain
- Digital transformation, search for intelligence
- Mainstream market 300k (SW market), 10% is 30k companies x (USD 10,000) - \$300M only in Solidworks business

OpenBOM Customers

- ✓ SMB/SME manufacturing companies and startups you have not heard of but growing and moving upstream
- ✓ Contract manufacturers working with SME manufacturing companies
- ✓ Large enterprise (NPD, product development unit- e.g. ABB Marines, Beckman Coulter, Chubb, US FAA, etc.)
- ✓ Moving upstream to regulated industries and defense industry (defense contractors)



OpenBOM Adoption: A growing number of SMB/SME and Enterprise Customers

1900%

Growth
for the last 3 years

47K+

Total
registrations

800-1000

New registrations per
month

- Easy Adoption and Scale
- Online Onboarding, Training and Support
- Doesn't require expensive implementation

Chubb
POWERED BY API GROUP

EMERSON

**BECKMAN
COULTER**

**Hirschvogel
Automotive Group**

P&G

xerox



Federal Aviation
Administration

ABB

openbom Achievements



320+ G2 reviews, #1 in G2 PLM Grid
80+ customer stories online SMB/SMEs, Enterprise

80+

Public user stories online

320+

Public reviews on G2 including video customer reviews

“ **xerox**

5 hours per week on BOM maintenance - now 10 minutes.
OpenBOM gives us what we need without the significant overhead of the big PLM system”

Lead Engineer, Xerox Corp. ([Read the story](#))”

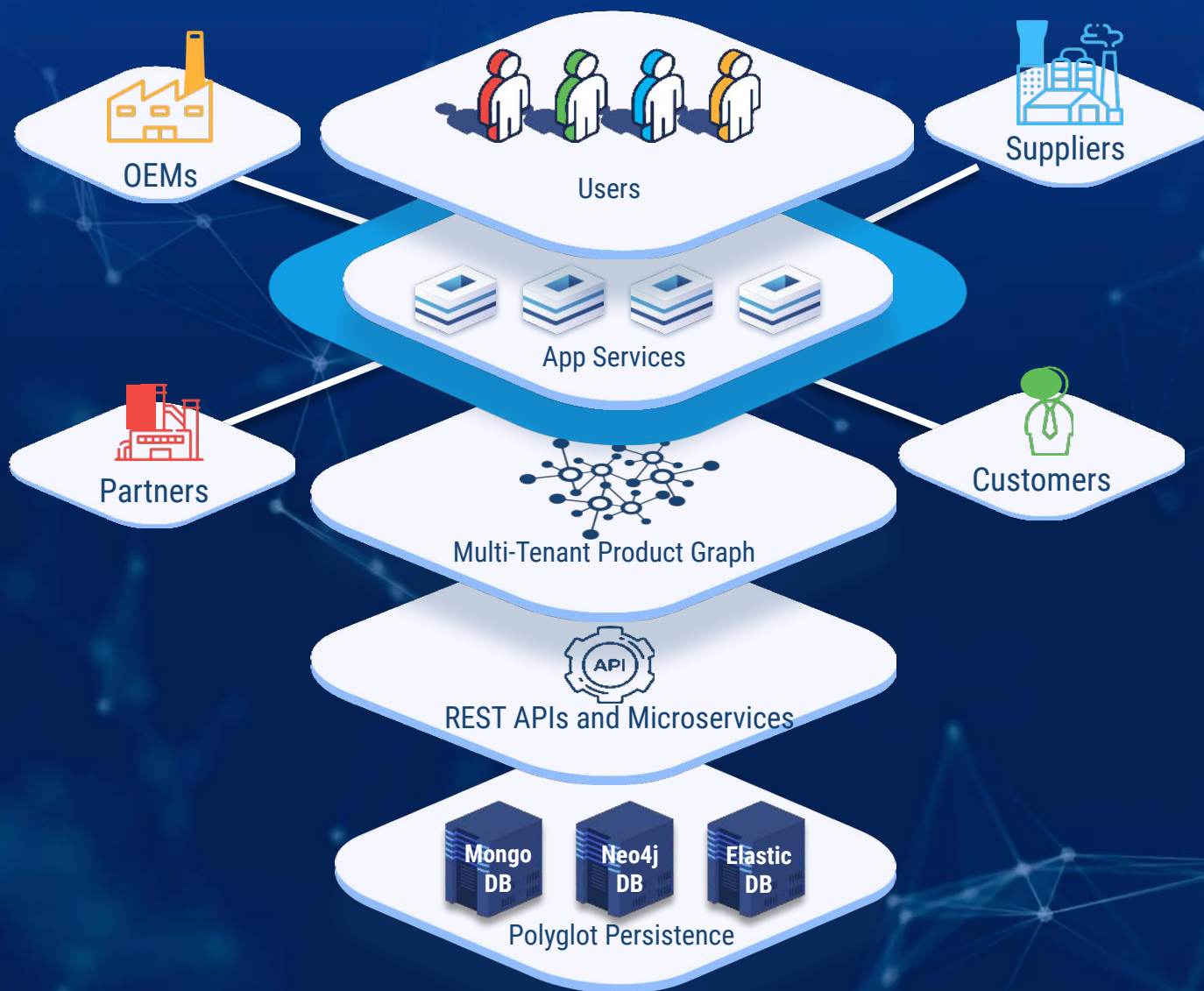
“



“From the multi-level product BOM, we create an Order in OpenBOM for our next batch of units. The Quantity Gap (the on-hand inventory) is calculated and the buyers know immediately what we need to buy to complete that order. OpenBOM vendor sources have been pre-defined for each item to smooth the way when supplier shortages are encountered.”

Jackie Wu, CEO ([Read the story](#))”

OpenBOM Platform Architecture & Technology Highlights



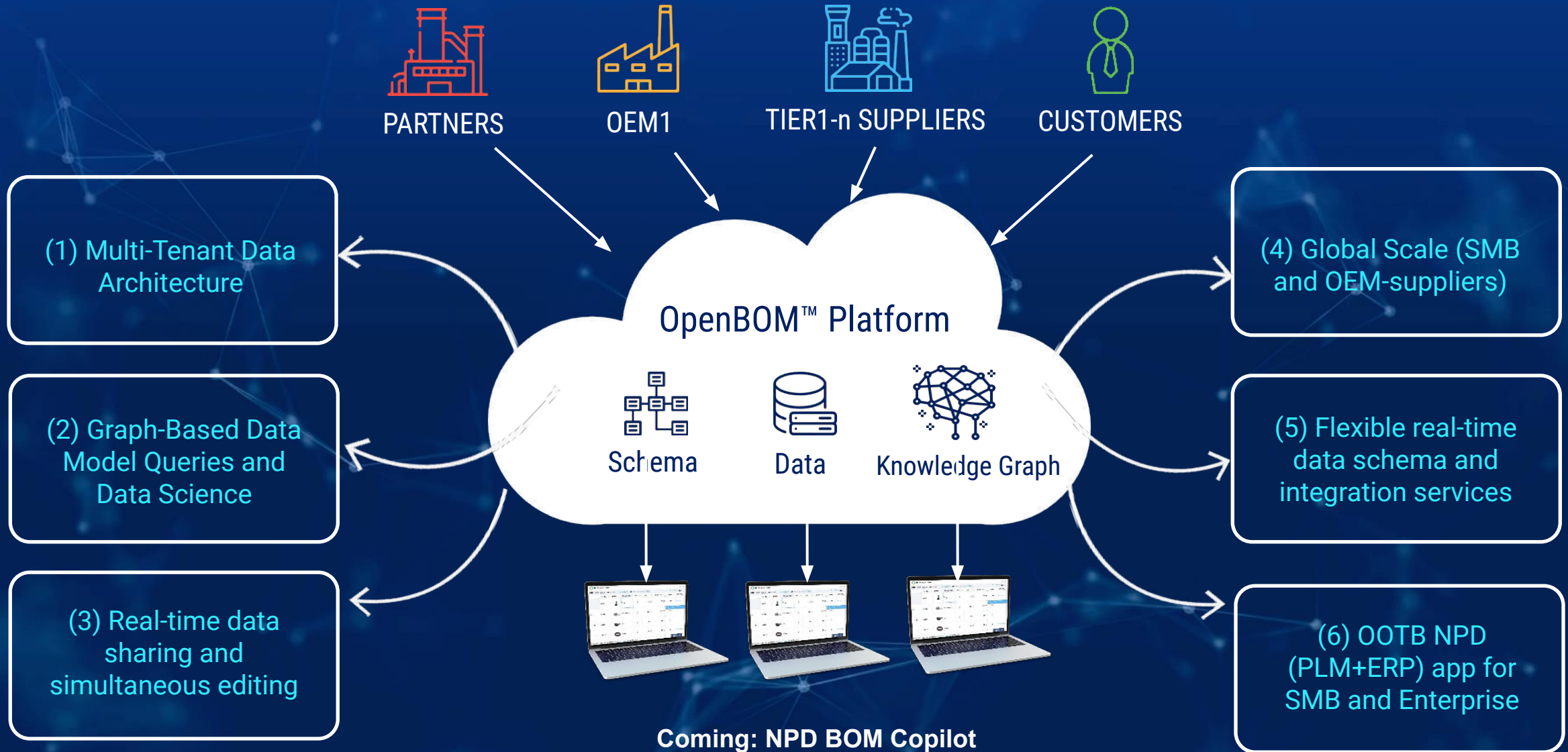
Gartner

By 2025, graph technologies will be used in 80% of data and analytics innovations, up from 10% in 2021, facilitating rapid decision making across the organization

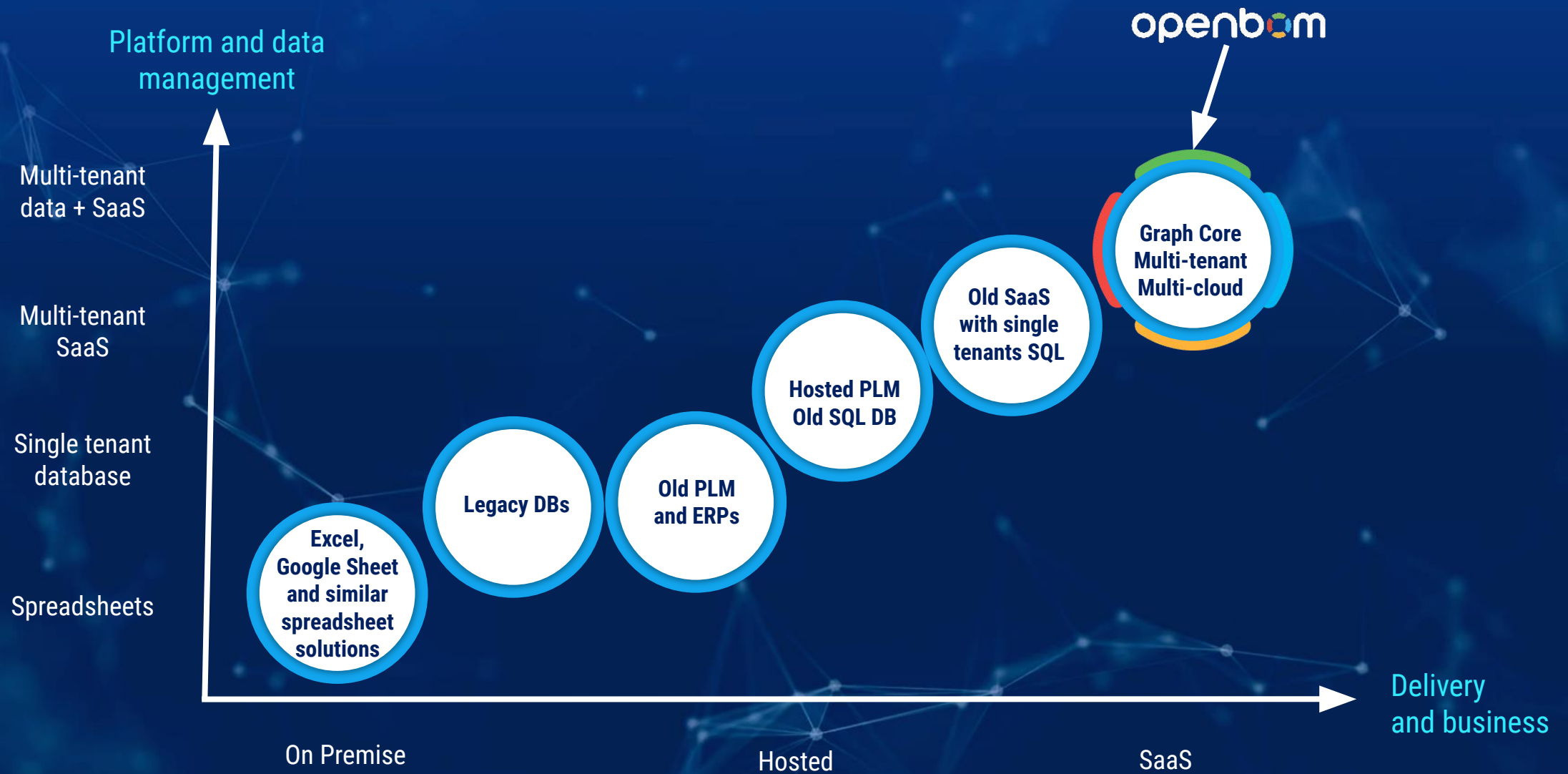
80%
By 2025

- SaaS, public, private (AWS)
- Multi-tenant flexible data model
- Real-time collaboration (2 US Patents)
- Simultaneous Collaborative Editing
- Role-based instant data sharing
- Graph & Data Science support
- Generative AI / LLM support in research

Key Differentiators Of OpenBOM Digital Thread Platform



Competition Trends



Leadership Team

A unique and diverse group of people with deep and unique product development experience. Before **OpenBOM**, we developed solutions for Boeing, Airbus, Nokia, Bosch, Gulfstream as well as worked for many medium-sized and small industrial companies.



Oleg Shilovitsky

CEO, co-founder

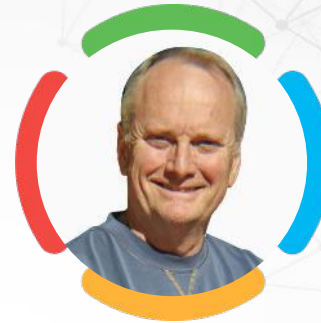
PDM/PLM experience
Dassault Systems
Autodesk
BeyondPLM Blog
(from 2008)
Industry connections



Chris Chaulk

Chief Architect

Tech and Architecture
Data Management
Semantic tech
EMC
Nokia
Everbridge



Steve Hess

VP Product

Mechanical Engineer / Robotics
Customer #1 experience
Teradyne
Solidworks
Onshape



Jared Haw

VP Revenue

Manufacturing experience
Contract Manufacturing (China)
Digital business experience
Global Manufacturing
OpenBOM customer

More Than 100 Years Of Combined Experience 😊



Thank you!